

# eChamber

## Spacer Information



**Turbo 220ml**  
Neonate, Infant, Child and Adult

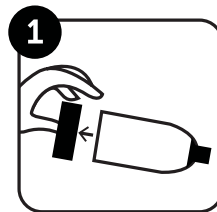


**La Grande 510ml**  
Adult

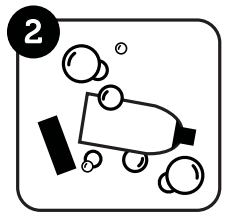
### Please note:

- eChamber Spacers are made from anti-static plastic so require no priming
- Always have the spacer in your mouth when you press the puffer and ensure a good seal with lips around the mouthpiece
- Use a mask for Neonates and Infants that cannot seal their lips around the mouthpiece and always ensure a good seal is achieved with the mask
- Always follow the instructions provided with your inhaler
- Check for foreign objects, broken or deteriorated parts prior to use and contact your health professional if you have concerns
- Listen for the valve clicking when you breathe in and out. This indicates sufficient inspiratory/expiratory flow and proper technique

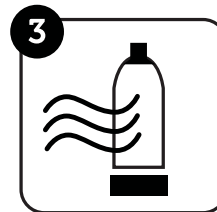
### Cleaning Instructions



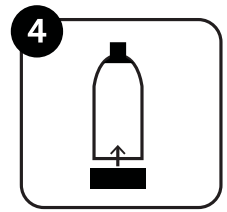
Remove base only



Wash in soapy water



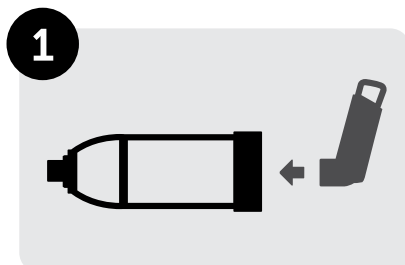
Allow to air dry



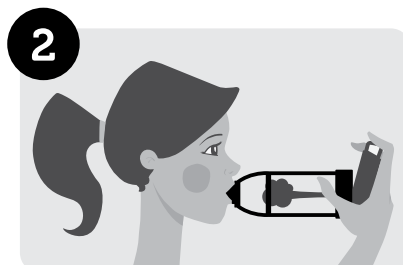
Replace base once dry

### Recommendations for use

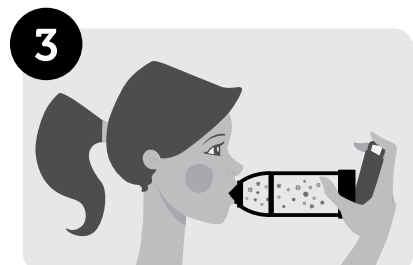
Clean once a week



Remove cap and shake the puffer, then insert puffer into the spacer as shown



Place lips around mouthpiece  
Press puffer



Breathe in and out normally through the mouth 4-6 times  
If more than one puff is required, repeat step 2-3



apexmedical

Phone: 0800 469 633 or Email: [info@apexmedical.co.nz](mailto:info@apexmedical.co.nz)

Download this information sheet at: [www.apexmedical.co.nz/spacers](http://www.apexmedical.co.nz/spacers)