

Diabetes

*‘people living with diabetes are :
leading partners in their own care
within systems that ensure they can manage their
own condition effectively, with appropriate support’.*

Dr Paul Drury, Dr Helen Rodenburg

Ministry of Health

6th November 2014

Auckland

Outline

- ✓ Welcome – what's in your packs
- ✓ Trends in diabetes
- ✓ Follow-up from last year
- ✓ Looking forward:
 - Updates on the future agenda
 - What are the issues?
 - Understanding diabetes
 - Overall Direction

Feedback welcome



What's in your pack?

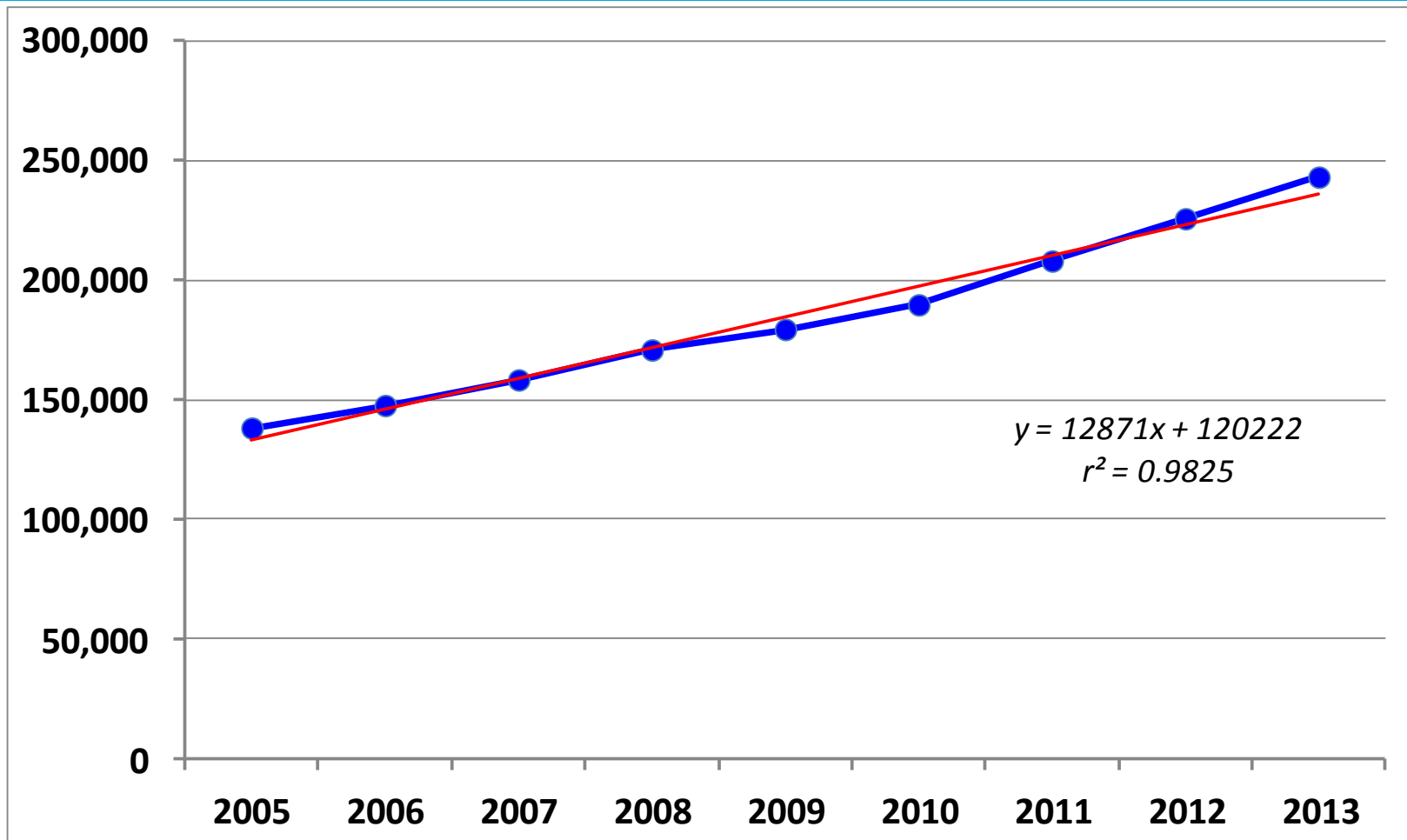
- Your DHB's baseline data (+mean, highest and lowest for NZ)
 - Details of the Quality Standards Toolkit
 - Annual planning guidance
 - Gestational diabetes (GDM) guideline
 - Chronic kidney disease (CKD) advice
 - Very early draft revision of retinal screening guidance for consultation
-

Annual changes in VDR numbers

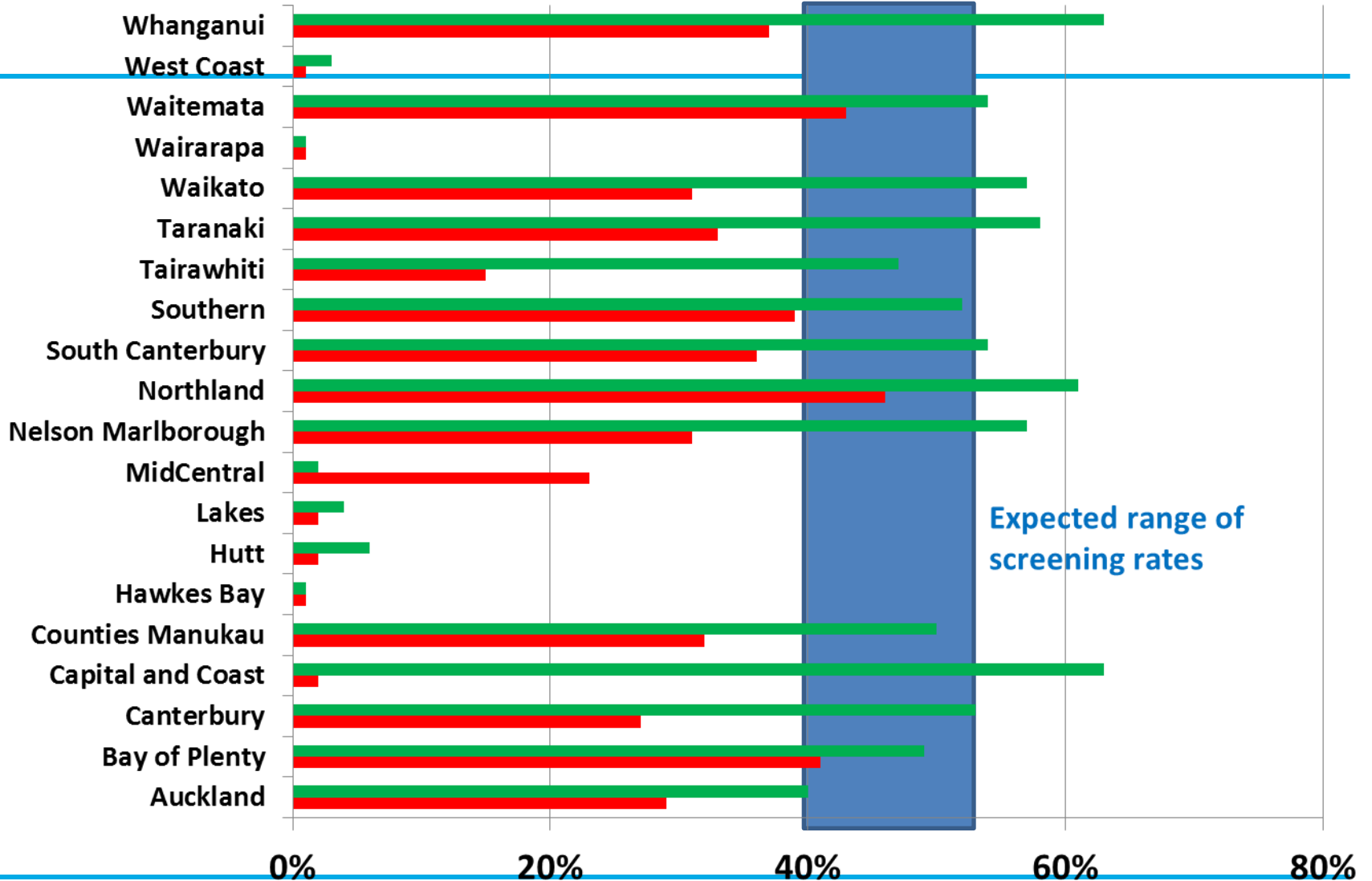
2005-2013 end-year

At end-December	Total count	Change on previous year
2005	138200	
2006	147650	+ 6.8%
2007	158352	+ 7.2%
2008	170867	+ 7.9%
2009	179454	+ 5.0%
2010	189737	+ 5.7%
2011	208076	+ 9.7%
2012	225731	+ 8.5%
2013	243125	+ 7.7%

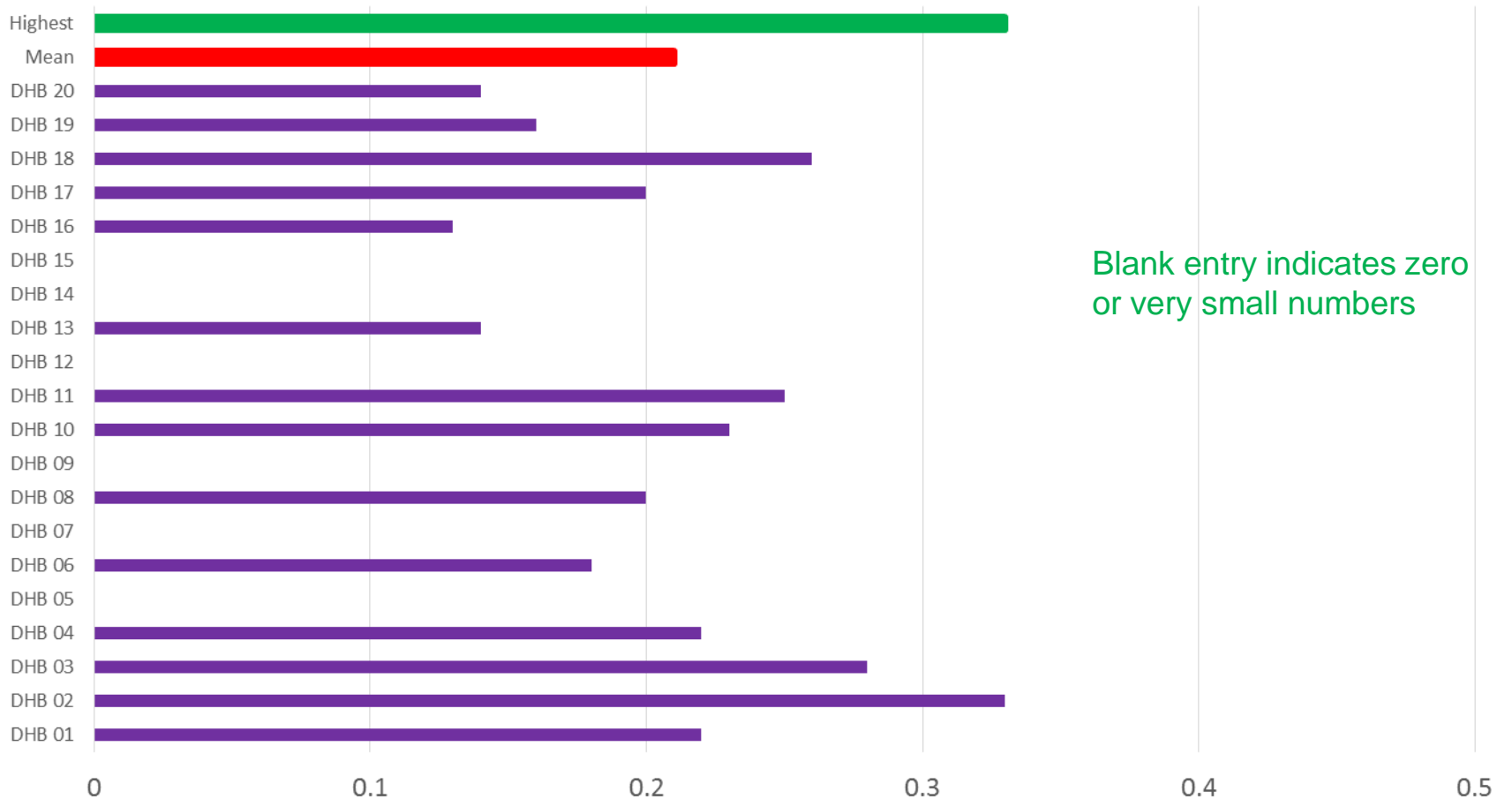
VDR numbers 2005-2013 All as at 31-Dec



Retinal screening rates 2011-13 - percentage of DM population

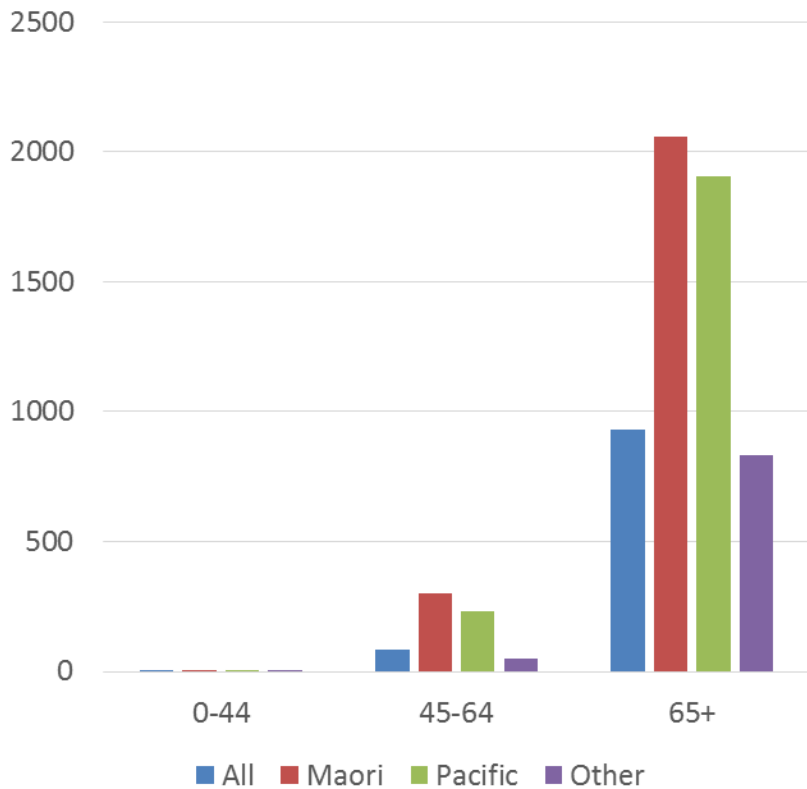


Amputation rates by DHB 2013 (%age rate)

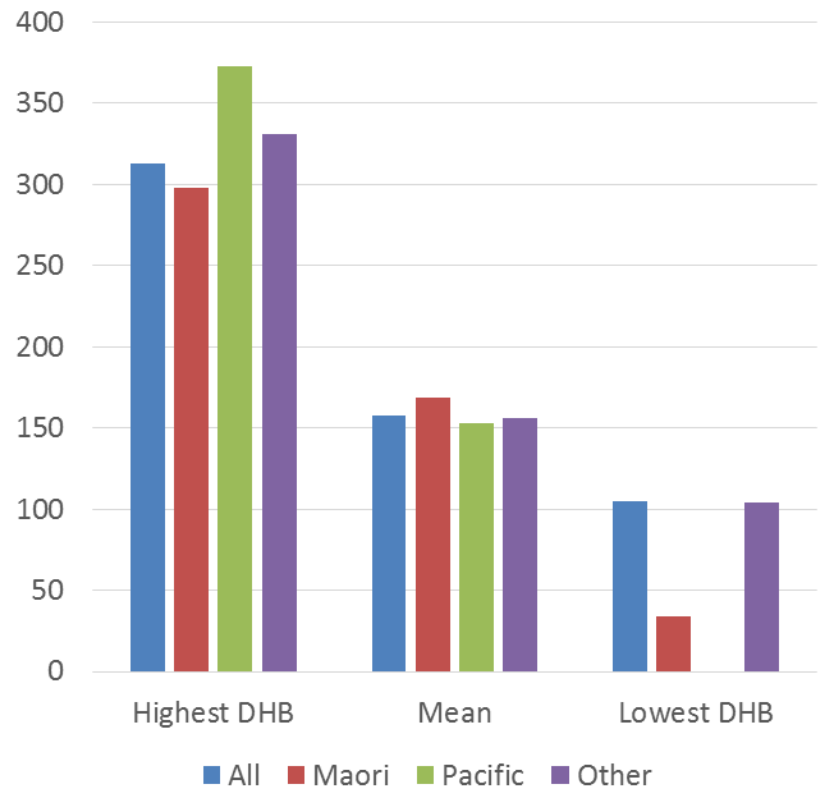


Age-standardised death rates for people with diabetes

Rate per 100,000 popn

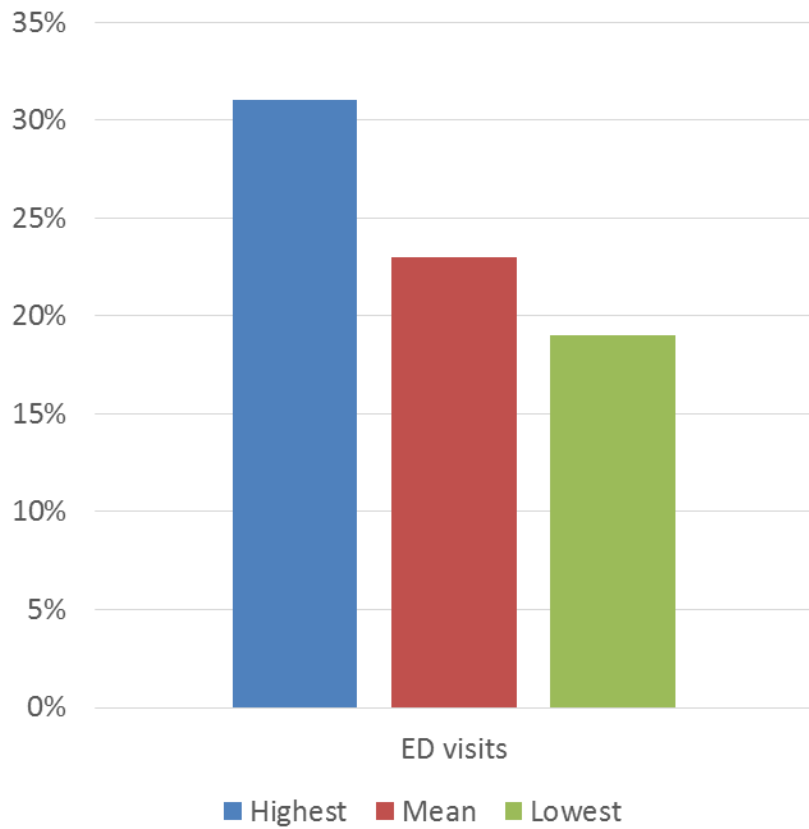


Highest, Mean and Lowest

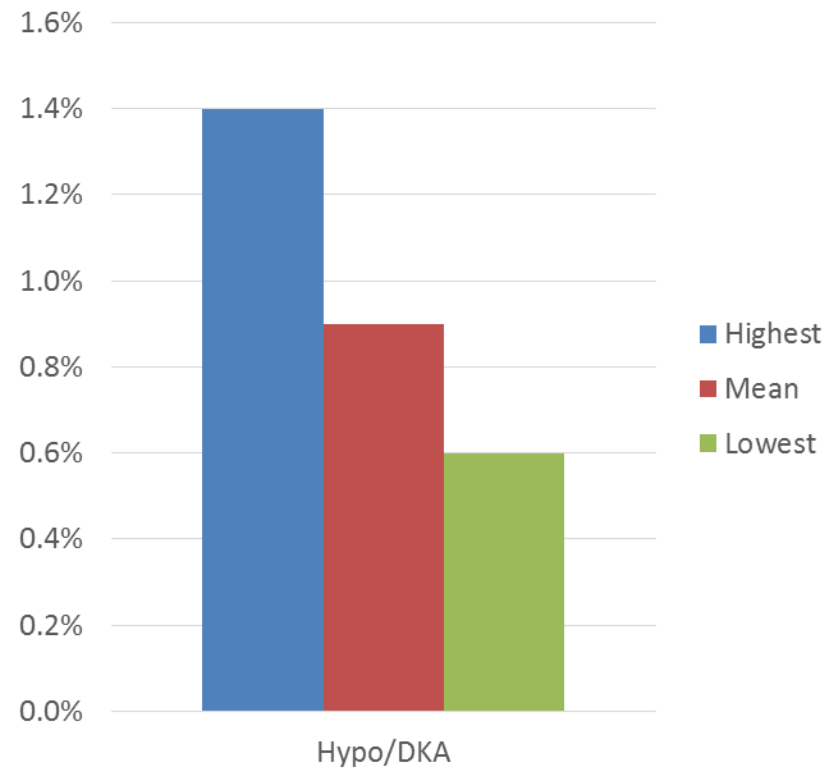


Some hospital and ED-based measures (from VDR)

ED visits during 2012-13



Hypos or DKA in 2012-13



Follow up from last year

Feedback	Actions
Stakeholder feedback, sharing learning	More interaction, quarterly feedback
Minimal education/updates	Use of HIIRC site
Quality Standards	Developed and published, Toolkit now available - please use!
Social marketing for healthy lifestyle	Healthy communities
DSME – standardise tool to monitor quality and resources	Self management and support advice Draft paper on evaluation
Need outcome measures that are meaningful , (how to retrieve data)	Baseline data as a start HSQC Atlas Indicators – an ongoing project
	How does all this fit with Alliances and Clinical Governance?

Looking forward: What are the issues

Consumer feedback:

- “Invisibility” of diabetes – the time of diagnosis can be traumatic
 - People have difficulty understanding diabetes, even after being diagnosed with the condition.
 - Isolated living makes it harder to manage
 - Capacity for self management varies widely
 - Culturally based diet differences – limited advice available for some
 - Variation in availability and use of resources/ IT solutions
-

Looking forward: What are the issues

Health Sector:

- The need to adapt in response to increased number of people with diabetes (and other long-term conditions)
 - How to expand new models of care
 - How to reduce variation across NZ – use of the Diabetes Atlas (HQSC)
 - Taking into account complexity and specialist support for primary care
 - Reducing duplication of information/time
 - Ensuring care is optimal/improving effectiveness and efficiency
 - Effective systems for Clinical Governance / CQI
 - Increased data transparency – at practice, PHO and DHB level
-

Looking forward - “Understanding diabetes”

Possible “Understanding Diabetes” work programme:

- Development of a **national awareness campaign**
 - Collating the **tools and resources** that will be available within the site
 - (this is likely to be a mix of new and existing resources depending on what is identified through the stocktake and gap analysis)
 - Development of a **website**, with consumer involvement, that will house all of the links to the various tools, resources and information, apps etc
-

Overall Direction (not in any priority order)

Continued work on DCIP, DHB self assessment against Quality Standards

More on prediabetes

Inpatient recommendations

Improving quality and delivery of DSME and DSMS to the newly-diagnosed

Further implementation of foot check and podiatry initiatives

More work on young people and type 1 diabetes

Standards and Toolkit to improve health care



Minister's direction

We have had strong signals from Minister Coleman that his priorities are going to include

- Diabetes
 - Prevention
 - More services delivered in primary care
-

Thanks and Questions

Gaps?

What are we missing?

What are the biggest 'blocks' locally and nationally?

Solutions and local initiatives?

Will 'Understanding diabetes' at a national level help locally?

